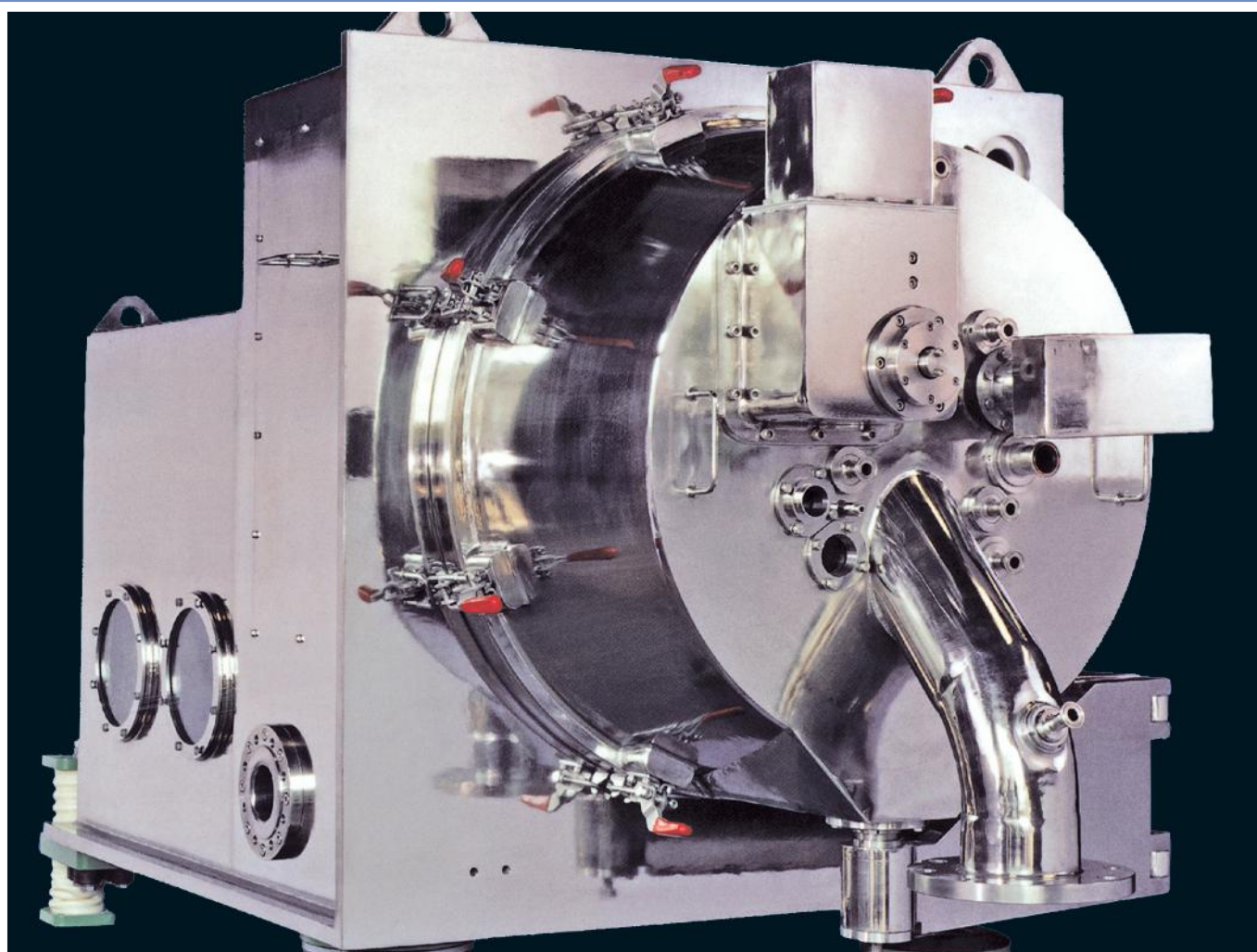
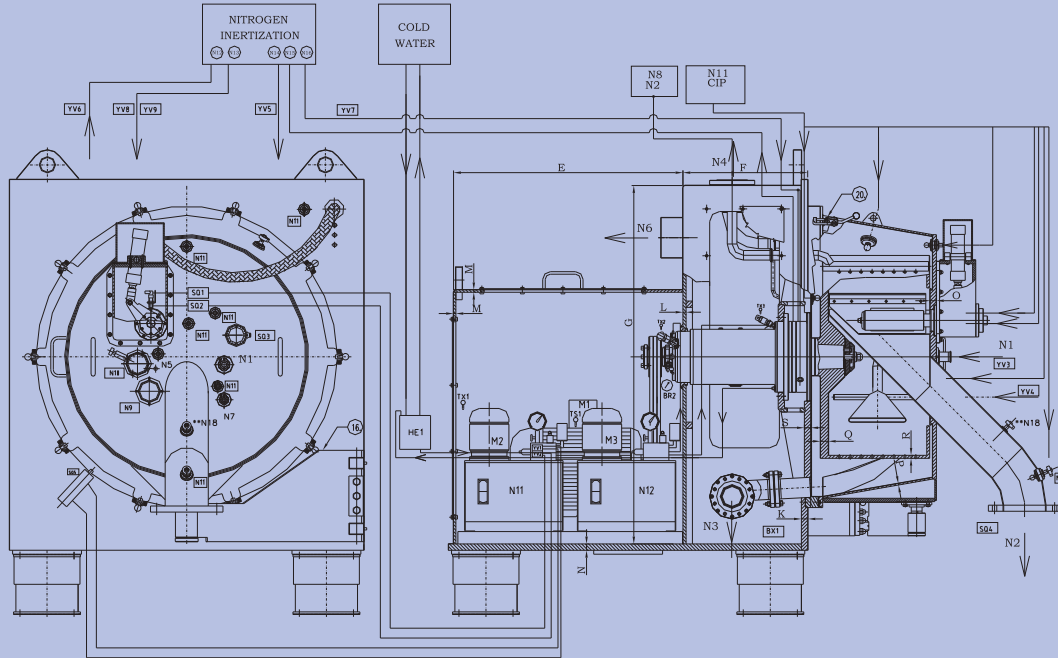


Horizontal Pharma Peeler Centrifuge





TECHNICAL DATA

Centrifuge Type		SHP 630/160	SHP 630	SHP 800	SHP 1000	SHP 1250	SHP 1600
Basket Diameter	mm	630	630	800	1000	1250	1600
Basket Depth	mm	160	320	400	500	630	800
Volume	l	20	40	80	170	320	680
Max. Load	kg	25	50	100	215	405	850
Max. Rotation Speed	rpm	2400	2400	1900	1500	1200	950
Max. Centrifugal Acceleration	g	2000	2000	1600	1250	1002	804
Motor Performance	kw	7.5	11	18.5	30	37	55
Net Weight	kgs	2300	2500	4400	7500	13000	23000

NOTE: 1) Values indicated are approximate and may vary on actual machines. 2) The centrifugal force relates to the basket diameter and maximum speed. 3) Basket load in kgs. will vary based on Bulk Density of the material. 4) We reserve the rights to alter size weight and design features.



SUKHRAS MACHINES PVT. LTD.
(An ISO 9001:2000 Certified Company)

OFFICE: 145, Adarsh Industrial Estate, Sahar Road, Chakala, Andheri (E), Mumbai 400 099. INDIA.
Tel.: 91-22-2832 2721 / 2832 5957/2832 5764. Fax: 91-22-2836 3501.
Email: sukhras@giasbm01.vsnl.net.in, sales@sukhras.com
Website: www.sukhras.com

Factory: Plot No. J-3, M.I.D.C., Tarapur Industrial Area, Boisar, Maharashtra-401 506.
Tel.: (02525) 272614 / 270579 Fax: 272703